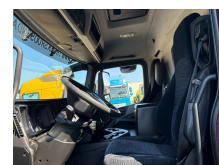


Mercedes-Benz 1924 + CARRIER SUPRA 950 + LOADLIFT + 2 COMPARTMENTS + EURO 6

Construction	Refrigerated/freezer transport
Year	2013
Id	TR1913
Vehicle identification number	WDB9630031L756065
Axle configuration	4x2
Axle count	2
Transmission	Automatic
Mileage	312.303 km
Fuel	Diesel
Emissionclass	Euro 6
Power	177 kW (240 PK)
Gross weight	19.000 kg
Load capacity	8.280 kg
Weight	10.820 kg
Length	1.035 cm
Width	259 cm
Construction length	800 cm
Construction width	244 cm
Construction height	254 cm





T.: [+31 \(0\)165 39 89 49](tel:+3165398949)

E.: info@trucksroosendaal.nl

Gewenten 37

4704 RE, Roosendaal

Netherlands

Accessories

Anti-lock braking system
Automatic
Central locking
Cruise control
Electrically adjustable door
mirrors
Electrically operated windows
Radio/CD player
Side door
Tail lift
Visor

Description

= Additional options and accessories =

- Rear doors
- Tailgate

= More information =

Cooling engine: diesel and electric

= Dealer information =

Do you have any questions or suggestions? Please feel free to contact us. We guarantee a response within 8 hours.

Prices do not include VAT.

No rights may be derived from the information provided.

Office phone number: +31165398949

Mobile: +31657945247 (Dutch - English - German - French - Spanish - Italian) Available via WhatsApp and Viber.

Mobile: +31623880596 Available via WhatsApp and Viber.

When paying by bank transfer, the funds must be transferred to our bank account listed below. Always verify the payment details on our website. Please contact us if you have received different information.

If in doubt, please call us so we can verify the invoice and/or payment.

Bank details:

Bank name: ING

Bank address: Bijlmerdreef 106 1102 CT Amsterdam

IBAN number: NL97INGB0117176699

EORI/VAT/TAX: NL810574901B(01)

BIC/SWIFT: INGBNL2A