

MAN + HMF 4220 K4 4X EXT + JIB FJ 900 6 X EXT + 8X4 + REMOTE + MANUAL

Construction	Crane
Year	2006
Id	TR1868
Vehicle identification number	WMAH39ZZ86M456767
Axle configuration	8x4
Axle count	4
Transmission	Manual
Mileage	277.138 km
Fuel	Diesel
Emissionclass	Euro 3
Power	316 kW (430 PK)
Gross weight	32.000 kg
Load capacity	11.700 kg
Weight	20.300 kg

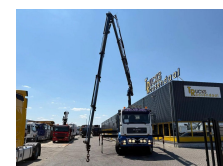
Accessories

Air conditioning
 Aluminium fuel tank
 Anti-lock braking system
 Central locking
 Coupling
 Electrically adjustable door
 mirrors
 Fog lights
 Radio/CD player
 Spotlights
 Towbar
 Trailer coupling
 Visor

Description

= Additional options and accessories =

- 3 chairs
- Additional steering axle
- Beacon(s)





T.: [+31 \(0\)165 39 89 49](tel:+3120165398949)

E.: info@trucksroosendaal.nl

Gewenten 37

4704 RE, Roosendaal

Netherlands

- Front fog lights
- Steering Axle
- Work lamp(s)

= Remarks =

Crane

Number of hydraulic extensions: 8

Number of manual extensions: 2

Number of support legs: 4

Remote control: ?

Load Hook: ?

= Dealer information =

Do you have any questions or suggestions? Please feel free to contact us. We guarantee a response within 8 hours.

Prices do not include VAT.

No rights may be derived from the information provided.

Office phone number: +31165398949

Mobile: +31657945247 (Dutch - English - German - French - Spanish - Italian) Available via WhatsApp and Viber.

Mobile: +31623880596 Available via WhatsApp and Viber.

When paying by bank transfer, the funds must be transferred to our bank account listed below. Always verify the payment details on our website. Please contact us if you have received different information.

If in doubt, please call us so we can verify the invoice and/or payment.

Bank details:

Bank name: ING

Bank address: Bijlmerdreef 106 1102 CT Amsterdam

IBAN number: NL97INGB0117176699

EORI/VAT/TAX: NL810574901B(01)

BIC/SWIFT: INGBNL2A