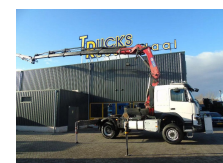


## Volvo 500 + 4x4 + HMF 4020 5x + JIB 4x 30 METER + REMOTE

<b>Price</b>	€ 165.000,-
<b>Construction</b>	Standard tractor
<b>Year</b>	2017
<b>Id</b>	TR1003-A
<b>Vehicle identification number</b>	YV2XT40B8HA803276
<b>Axle configuration</b>	4x4
<b>Axle count</b>	2
<b>Transmission</b>	Automatic
<b>Mileage</b>	577.391 km
<b>Fuel</b>	Diesel
<b>Operating hours</b>	4.937 h
<b>Emissionclass</b>	Euro 6
<b>Power</b>	368 kW (500 PK)
<b>Weight</b>	16.600 kg
<b>Accessories</b>	All wheel drive Automatic Sleeper cab



### Description

Crane  
 Number of hydraulic extensions: 9  
 Number of support legs: 4  
 Remote control: ?

YV2XT40B8HA803276

= Dealer information =

Do you have any questions or suggestions? Please feel free to contact us. We guarantee a response within 8 hours.

Prices do not include VAT.

No rights may be derived from the information provided.

Office phone number: +31165398949



T.: [+31 \(0\)165 39 89 49](tel:+3120165398949)

E.: [info@trucksroosendaal.nl](mailto:info@trucksroosendaal.nl)

Gewenten 37

4704 RE, Roosendaal

Netherlands

Mobile: +31657945247 (Dutch - English - German - French - Spanish - Italian) Available via WhatsApp and Viber.

Mobile: +31623880596 Available via WhatsApp and Viber.

When paying by bank transfer, the funds must be transferred to our bank account listed below. Always verify the payment details on our website. Please contact us if you have received different information.

If in doubt, please call us so we can verify the invoice and/or payment.

Bank details:

Bank name: ING

Bank address: Bijlmerdreef 106 1102 CT Amsterdam

IBAN number: NL97INGB0117176699

EORI/VAT/TAX: NL810574901B(01)

BIC/SWIFT: INGBNL2A