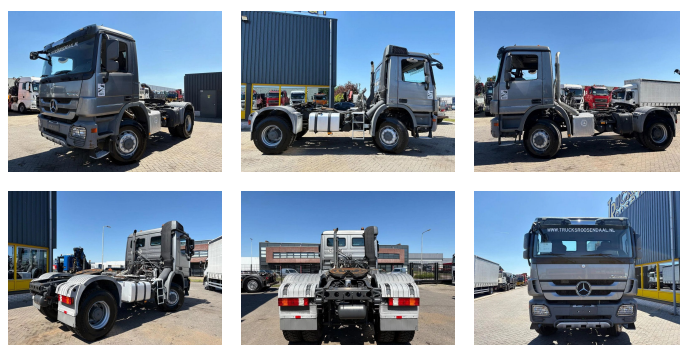


## Mercedes-Benz 1841 + 4X4 + 3 PEDAL EPS + LOW KM + PTO + EURO 5

<b>Construction</b>	Standard tractor
<b>Year</b>	2011
<b>Id</b>	TR1814
<b>Vehicle identification number</b>	WDB9340821L570605
<b>Axle configuration</b>	4x4
<b>Axle count</b>	2
<b>Transmission</b>	Semi-automatic
<b>Mileage</b>	191.262 km
<b>Fuel</b>	Diesel
<b>Emissionclass</b>	Euro 5
<b>Power</b>	302 kW (410 PK)
<b>Gross weight</b>	19.250 kg
<b>Load capacity</b>	11.095 kg
<b>Weight</b>	8.155 kg
<b>Accessories</b>	All wheel drive



### Description

Year of manufacture: 2011

= Dealer information =

Do you have any questions or suggestions? Please feel free to contact us. We guarantee a response within 8 hours.

Prices do not include VAT.

No rights may be derived from the information provided.

Office phone number: +31165398949

Mobile: +31657945247 (Dutch - English - German - French - Spanish - Italian) Available via WhatsApp and Viber.

Mobile: +31623880596 Available via WhatsApp and Viber.



T.: [+31 \(0\)165 39 89 49](tel:+310165398949)

E.: [info@trucksroosendaal.nl](mailto:info@trucksroosendaal.nl)

Gewenten 37

4704 RE, Roosendaal

Netherlands

When paying by bank transfer, the funds must be transferred to our bank account listed below. Always verify the payment details on our website. Please contact us if you have received different information.

If in doubt, please call us so we can verify the invoice and/or payment.

Bank details:

Bank name: ING

Bank address: Bijlmerdreef 106 1102 CT Amsterdam

IBAN number: NL97INGB0117176699

EORI/VAT/TAX: NL810574901B(01)

BIC/SWIFT: INGBNL2A