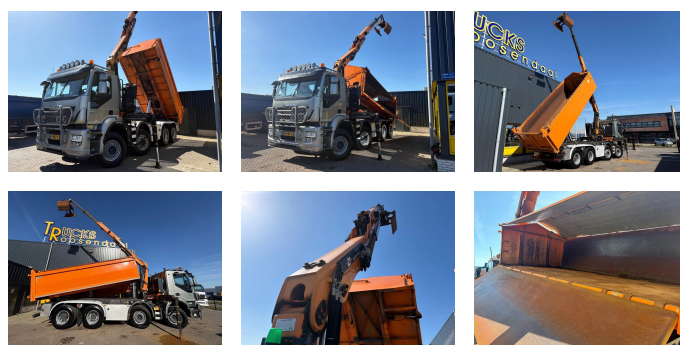


## Iveco 500 + PALFINGER EPSILON Q170 + 8X4 + TIPPER + EURO 6 + REMOTE

Price	€ 56.500,-
Construction	Crane
Year	2014
Id	TR1741-A
Axle configuration	8x4
Axle count	4
Transmission	Automatic
Mileage	515.012 km
Fuel	Diesel
Emissionclass	Euro 6
Power	368 kW (500 PK)
Gross weight	41.000 kg
Load capacity	22.530 kg
Weight	18.570 kg
Length	870 cm
Width	255 cm
Accessories	Automatic



### Description

Structure

Construction year: 2014

Crane

Number of hydraulic extensions: 2

Remote control: ?

Rotator: ?

Squeeze Box: ?

= More information =

Tipper: Back