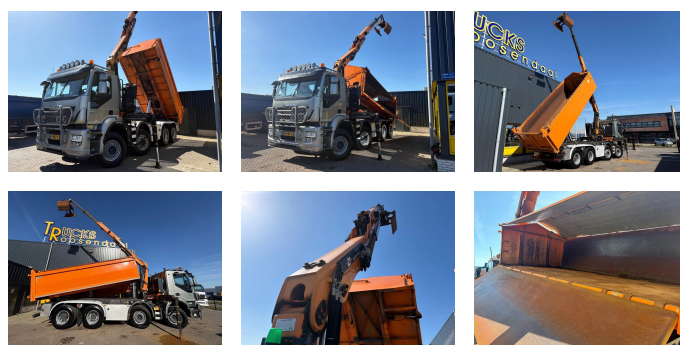


Iveco 500 + PALFINGER EPSILON Q170 + 8X4 + TIPPER + EURO 6 + REMOTE

Price	€ 56.500,-
Construction	Tipper
Year	2014
Id	TR1741
Axle configuration	8x4
Axle count	4
Transmission	Automatic
Mileage	515.012 km
Fuel	Diesel
Emissionclass	Euro 6
Power	368 kW (500 PK)
Gross weight	41.000 kg
Load capacity	22.530 kg
Weight	18.570 kg
Length	870 cm
Width	255 cm
Construction length	551 cm
Construction width	226 cm
Construction height	123 cm
Accessories	Automatic



Description

Structure

Construction year: 2014

Crane

Number of hydraulic extensions: 2

Remote control: ?

Rotator: ?

Squeeze Box: ?



T.: [+31 \(0\)165 39 89 49](tel:+31(0)165398949)

E.: info@trucksroosendaal.nl

Gewenten 37

4704 RE, Roosendaal

Netherlands

= More information =

Bodywork: Tipper with crane

Tipper: Back