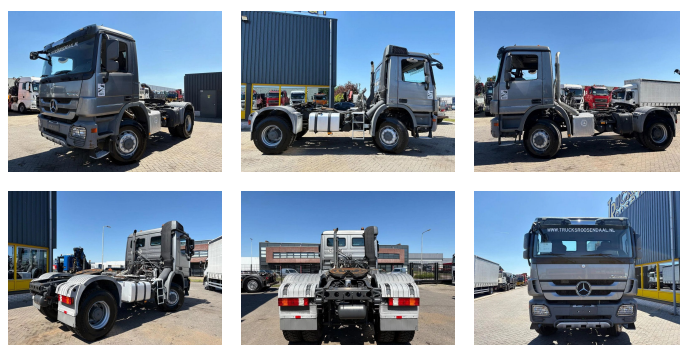


Mercedes-Benz 1841 + 4X4 + 3 PEDAL EPS + LOW KM + PTO + EURO 5

Konstruktion	Standard-SZM
Baujahr	2011
Id	TR1814
Fahrzeug- identifizierungsnummer	WDB9340821L570605
Radformel	4x4
Anzahl der achsen	2
Getriebe	Halbautomatik
Kilometerstand	191.262 km
Kraftstoffart	Diesel
Schadstoffklasse	Euro 5
Leistung	302 kW (410 PK)
Bruttogewicht	19.250 kg
Nutzlast	11.095 kg
Gewicht	8.155 kg



Beschreibung

Baujahr: 2011

= Firmeninformationen =

If you have any questions or suggestions, Don't hesitate to contact us. We guarantee an answer within 8 hours. Prices are without VAT.

No rights could be derived from given information.

Office Phone: 0031165398949

MOB: 0031657945247 (Nederlands - English - Deutsch - Francais - Español - Italiano) Available on What's App and Viber.

MOB: 0031653301652 (Nederlands) Available on What's App and Viber.

When you pay by bank transfer, the money needs to be



T.: [+31 \(0\)165 39 89 49](tel:+310165398949)

E.: info@trucksroosendaal.nl

Gewenten 37

4704 RE, Roosendaal

Netherlands

transferred to our Bank Account underneath. Always check the payment details that are stated on our website. In case you have received other information please contact us.

In case you have doubts please call us so we can verify the invoice and/or payment.

Bank details:

Rabobank

Laan van Limburg 2

4701BP Roosendaal

IBAN: NL 89 RABO 0174 3347 10

EORI/BTW/TAX: NL81057401B(01)

BIC/SWIFT: RABONL2U