

## Volvo + 6X6 + PALFINGER PK44002 6x + JIB 4x + MANUAL + REMOTE

<b>Konstruktion</b>	Kranwagen
<b>Baujahr</b>	2002
<b>Id</b>	TR1760
<b>Radformel</b>	6x6
<b>Anzahl der achsen</b>	3
<b>Getriebe</b>	Schaltgetriebe
<b>Kilometerstand</b>	313.928 km
<b>Kraftstoffart</b>	Diesel
<b>Schadstoffklasse</b>	Euro 3
<b>Leistung</b>	279 kW (380 PK)
<b>Bruttogewicht</b>	26.000 kg
<b>Nutzlast</b>	12.100 kg
<b>Gewicht</b>	13.900 kg

### Beschreibung

Kran

Anzahl der hydraulischen Auszüge: 10

Anzahl manueller Erweiterungen: 2

Anzahl Stützbeine: 4

Fernbedienung: ?

Meter Kapazität: 26 m

Kapazität Kilo: 12160 kg

= Firmeninformationen =

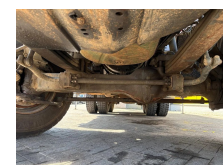
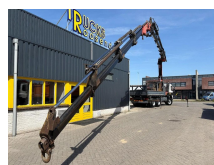
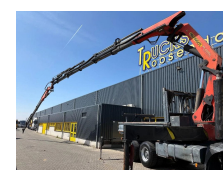
If you have any questions or suggestions, Don't hesitate to contact us. We guarantee an answer within 8 hours.  
Prices are without VAT.

No rights could be derived from given information.

Office Phone: 0031165398949

MOB: 0031657945247 (Nederlands - English - Deutsch - Francais - Español - Italiano) Available on What's App and Viber.

MOB: 0031653301652 (Nederlands) Available on What's App





T.: [+31 \(0\)165 39 89 49](tel:+310165398949)

E.: [info@trucksroosendaal.nl](mailto:info@trucksroosendaal.nl)

Gewenten 37

4704 RE, Roosendaal

Netherlands

and Viber.

When you pay by bank transfer, the money needs to be transferred to our Bank Account underneath. Always check the payment details that are stated on our website. In case you have received other information please contact us.

In case you have doubts please call us so we can verify the invoice and/or payment.

Bank details:

Rabobank

Laan van Limburg 2

4701BP Roosendaal

IBAN: NL 89 RABO 0174 3347 10

EORI/BTW/TAX: NL81057401B(01)

BIC/SWIFT: RABONL2U